

Superior Solutions for Sheet Metal Fabricators

# AMADA STYLE THIN TURRET TOOLING



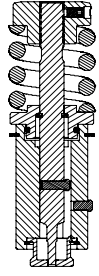
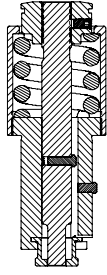
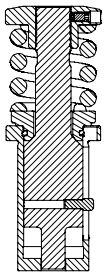

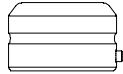
PN 2011

**WORLDWIDE HEADQUARTERS:**

1295 Lund Boulevard, Anoka, Minnesota 55303 USA  
Tel 763.421.0230 Fax 763.421.0285  
Toll Free: Tel 800.328.4492 Fax 800.541.0285  
[mate.com](http://mate.com)



# AMADA STYLE THIN TURRET TOOLING FOR 1-1/4" STATION

	<u>1/2" Snap-Apart</u>	<u>5/8" Drop-In</u>	<u>1-1/4" Full Body</u>
Upper Assembly	<p><b>Round</b></p> <p><b>Shape</b></p> 	<p><b>Round</b></p> <p><b>Shape</b></p> 	<p><b>Round</b></p> <p><b>Shape</b></p> 
Hardware	Punch Head <b>MATE00393</b>	Punch Head <b>MATE00386</b>	Punch Head <b>MATE00388</b>
	Spring <b>MATE00007</b>		Spring <b>MATE00007</b>
	Spring Retainer (with O-ring) <b>MATE00011</b>		Spring Retainer (with O-Ring) <b>MATE00003</b>
	Support Ring <b>SRI00003</b>		
	Guide—Round <b>MATE00014</b>		
	Guide—Shape <b>MATE00016</b>		
Stripper Retaining Ring <b>SRI00004</b>			
Punch	Round** <b>PCSA0A</b>	Round <b>PDSX0A</b>	Round <b>PBSB0A</b>
	Shape** <b>PCSA_A</b>	Shape <b>PDSX_A</b>	Shape <b>PBSB_A</b>
	Ring*** <b>SRI00002</b> (2 required) Maxima® Coating		Maxima® Coating
Stripper	Round** <b>SCSA0A</b>	Round <b>SDSX0A</b>	Round <b>SBSB0A</b>
	Shape** <b>SCSA_A</b>	Shape <b>SDSX_A</b>	Shape <b>SBSB_A</b>
		Round** <b>SESX0A</b>	
	Shape** <b>SESX_A</b>		
Die	Round <b>DASB00</b>		
	Shape <b>DASB_0</b>		
	Shim Pack <b>MSAB</b>		

\*\* can be used with existing 1/2" drop-in style holders.  
 \*\*\* snap ring must be removed for use in Drop-In guide assembly.



[Dimensions in Inches(mm)]

# STANDARD PRODUCT FEATURES AND BENEFITS

**Punch Head**—Superior flatness for precise distribution of punching forces. Knurled edges for secure handling. Full compatibility with existing tooling inventory.

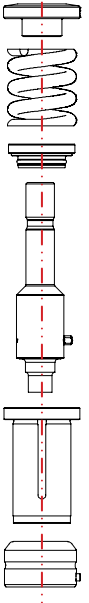
**Stripping Spring**—precise coil specification for optimum stripping performance. Shot peened surface for extended service life and maximum reliability.

**Spring Retainer**—precisely machined to seat securely on the punch shoulder to reduce punching stress and provide reliable operation.

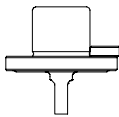
**Punch**—DuraSteel™ with superior hardness and toughness for maximum tool life. Hardened double-D key for precise orientation of shaped tools. 1/4 degree back taper and near polished punch flanks to reduce friction. Maxima® coating available for extreme applications.

**Stripper**—Hardened and ground for superior angularity and concentricity. Smooth rounded edges to eliminate sheet marking and improve piece part quality.

**Slug Free® Die**—Slug Free die geometry eliminates slug pulling to improve piece part quality and increase tool life. Highly wear-resistant tool steel provides optimum balance between hardness and toughness, for extended service life.

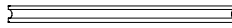


## AMADA STYLE THIN TURRET TOOLING FOR 3-1/2" STATION



DIAGONAL	SHAPE	PART NUMBER	PRICE
1.251 to 1.500	Round Shape	<b>PKSDOA</b> <b>PKSD_A</b>	
1.501 to 2.500	Round Shape	<b>PKSFOA</b> <b>PKSF_A</b>	
2.501 to 3.500	Round Shape	<b>PKSHOA</b> <b>PKSH_A</b>	

Maxima® Coating



SHAPE	PART NUMBER	PRICE
Round	<b>SKSDOA</b>	
Shape	<b>SKSD_A</b>	



SHAPE	PART NUMBER	PRICE
Round	<b>DASDOO</b>	
Shape	<b>DASD_O</b>	
Shim Pack	<b>MSAD</b>	

### Add-Ons

#### GENERAL

Radius Corner	<b>Add 25%</b>	To punch, stripper and die
Non-Standard Straight Before Radius (SBR)	<b>Add 25%</b>	To punch
Special Angle Setting	<b>Add 25%</b>	To punch and die
Special Angle Setting	<b>Add 25%</b>	1/2, 5/8 and 1-1/4" stripper

#### OPTIONAL SHEAR (LIMITED OPTIONS)

Small Diameter Round Tools	<b>No Charge</b>	
Diameter 0.031 (0.79) to 0.061 (1.55)	<b>Add 25%</b>	To punch, stripper and die
Diameter 0.062 (1.56) to 0.092 (2.34)	<b>Add 10%</b>	To punch, stripper and die

#### NARROW WIDTH SHAPED TOOLS

Widths under 0.079 (2.00)	<b>Add 25%</b>	To punch, stripper and die
---------------------------	----------------	----------------------------

### Accessories

- Urethane Slug Ejector—3.00mm  
**URE40002 (12 minimum)**
- Urethane Slug Ejector—6.00mm  
**URE40010 (12 minimum)**
- Snap Ring Pliers  
**MIS61129**
- 2.5mm Hex Wrench  
**MIS98896**
- Medium India Oil Stone  
**ST029807**
- Replacement 3-1/2" punch key bushing  
**MATE00318**

#### STANDARD SHAPES:

rectangle square quad "D" round hexagon octagon oval single "D" double "D" triangle diamond



[Dimensions in Inches(mm)]





visit [mate.com](http://mate.com)

## **MATE PRECISION TOOLING**

### **WORLDWIDE HEADQUARTERS:**

1295 Lund Boulevard, Anoka, Minnesota 55303 USA  
Tel 763.421.0230 Fax 763.421.0285 [mate.com](http://mate.com)

### **EUROPEAN HEADQUARTERS:**

Gablonzer Str, 25, 61440 Oberursel, Germany  
Tel +49.6171.8878.000 Fax +49.6171.8878.001 [mate.de](http://mate.de)

© The Mate Logo is a registered trademark of Mate Precision Tooling Inc.  
Amada is a trademark of Amada International