

Superior Solutions for Sheet Metal Fabricators

ULTRA[®] IMT[™] FULLY INDEXABLE MULTI TOOL

- 3-STATION
- 8-STATION



US: 7,726,554 and 8,152,052 and 8,464,928 and 8,413,561
China: CN 101528427B
Mexico: 306,976 and 305,729
Canada: CA 2,664,784

PN 2014

WORLDWIDE HEADQUARTERS:

1295 Lund Boulevard, Anoka, Minnesota 55303 USA
Tel 763.421.0230 Fax 763.421.0285
Toll Free: Tel 800.328.4492 Fax 800.541.0285
www.mate.com

MATE[®]
M
**PRECISION
TOOLING**
TRUSTED | QUALITY | SERVICE | SOLUTIONS

MATE ULTRA® IMT™ FULLY INDEXABLE MULTI TOOLS

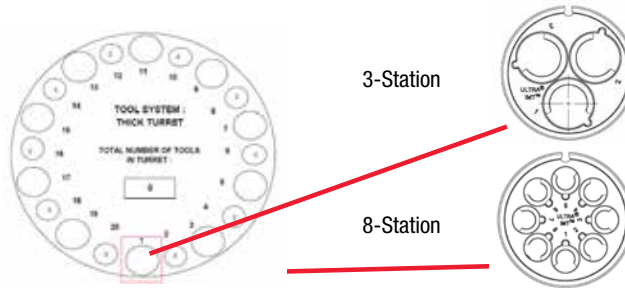
THE IDEAL MULTI TOOL. DELIVERED.™

What is a fully indexable multi tool?

A multi tool allows a standard indexing D-Station in a punch press to accept 8 or 3 “mini” stations. By using just one multi tool, your 20 station punch press becomes a 22 or 27 station press, expanding your capacity much more economically than purchasing an additional machine.

Mate’s patent pending ULTRA® IMT™ is a fully indexable multi tool that adds flexibility and expands the ability of a standard multi tool because, unlike standard multi tools, which can only have one angle setting, fully indexable multi tools can achieve any angle setting on the workpiece.

**20 STATION PRESS BECOMES
A 22 OR 27 STATION PRESS
WITH JUST ONE MULTI TOOL!**



Mate offers two versions of ULTRA IMT fully indexable multi tool:

- 3-Station uses ULTRA TEC® 1-1/4” B-Station punches and strippers, and thick turret B-Station dies. It can punch up to 6mm material with maximum tonnage of 16 tons (142kN).
- 8-Station uses ULTRA TEC® ½” A-Station punches and strippers, and thick turret A-Station dies. It can punch up to 6mm material with maximum tonnage of 7 tons (62kN).

Customer Driven Design

Mate conducted extensive customer research before embarking on the design of ULTRA IMT, providing them with the opportunity to define their version of the ideal multi tool:

Customers Requested	Mate Delivered
Easy to use and maintain	No tools are required for punch, striker and stripper retention/removal, making assembly and disassembly simple.
Ability to use standard punches, dies and strippers to minimize and simplify tooling inventory	ULTRA IMT uses Mate ULTRA TEC punches and strippers, and thick turret dies, eliminating the need for specialized inventory.
Increased tool life with adjustable length punches	Punches screw on to a punch head allowing easy length adjustment.
Variable stripping force options for heavy-duty and light duty applications.	With ULTRA IMT you can adjust the downward force to reduce sheet marking in thin material or aluminum.*
Easy active station identification.	ULTRA IMT has a clearly viewable “Zero Mark” and station ID window to quickly see the active station to help reduce potential error.
Improved ergonomics.	ULTRA IMT’s design makes it easy to wrap your hands around the holder. Plus, you can also use a T-Handle to assist in lifting the holder.
Easy turret installation	ULTRA IMT features a better external slot lead-in from the stripper retention plate, making installation a breeze.

* Do not exceed recommended tonnage. Consult product instructions for details.



[Dimensions in Inches(mm)]

EASY MAINTENANCE. NO TOOLS REQUIRED!



ULTRA IMT is designed to minimize your effort and maximize your uptime because you don't need tools to remove the striker plate, change punches, or for routine maintenance. Simply twist the striker plate to align the release dimples and remove. How easy is that!



Tools are not needed to install or remove punches either. You might say it's as easy as 1-2-3!

1. Rotate the skid plate to the clearance position.
2. Align the punch driver and punch keys.
3. Slide the punch into the pocket.



Quickly adjust the length of your punches by using the built-in length guide. Place the tip of the punch against the flange and rotate the punch driver to the guide body edge



[Dimensions in Inches(mm)]

MATE ULTRA® IMT™ FEATURES:**8-STATION MODEL SHOWN**

Lubrication Port to
all moving parts

Striker Assembly fits
only one way for ease
of use

Release/Zero Mark
Position Indicator

Punch Carrier

One piece Guide
design for tighter
tolerances allowing
burr-free punching of
thinner materials

Punch Holder Body
made with hardened
tool steel

No tools needed for
punch and stripper
installation or removal



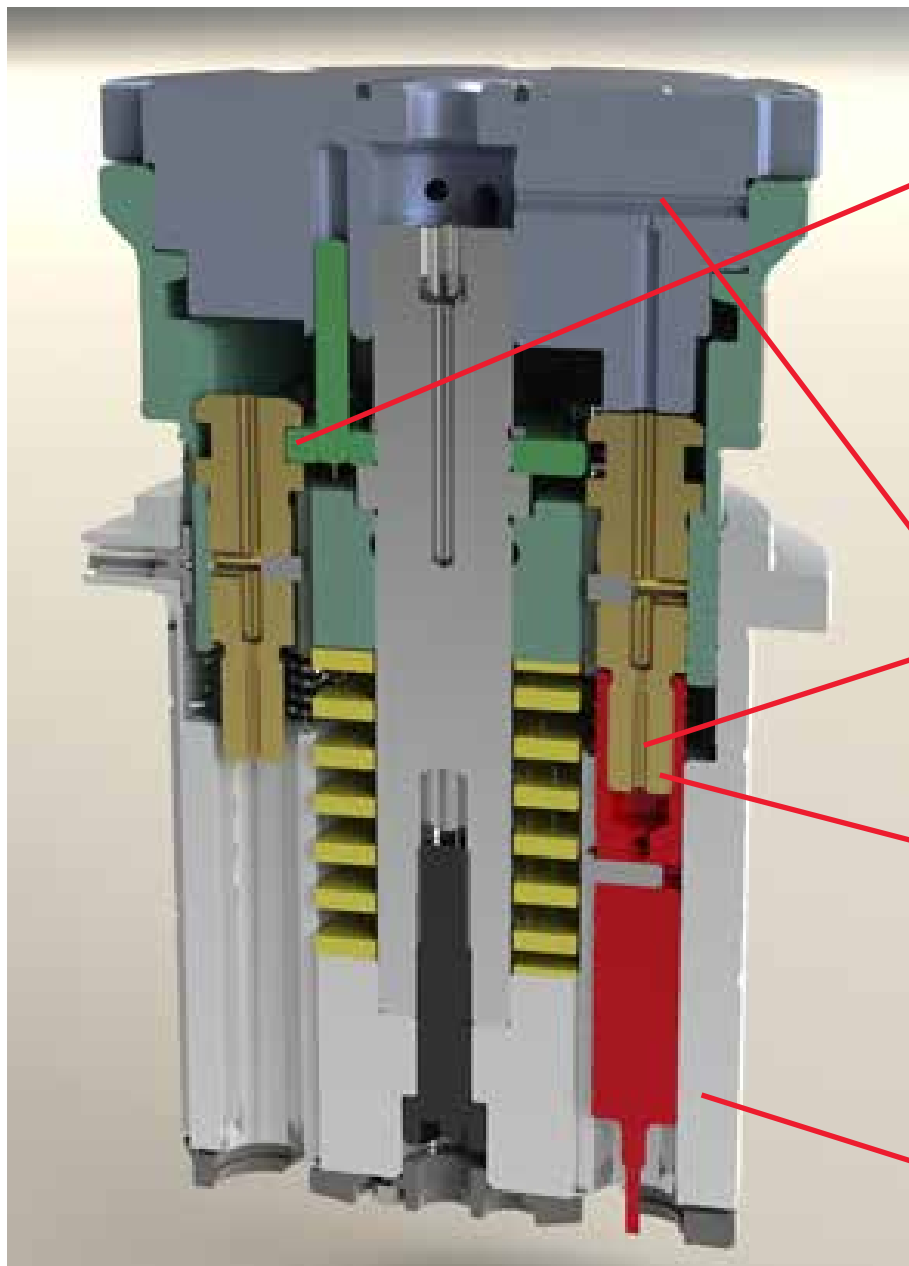
Replaceable stripper plate costs
less than replacing whole guide

*PATENT PENDING



[Dimensions in Inches(mm)]

MATE ULTRA® IMT™ FEATURES:



Dual direction
punch retention

Fully ported for
lubrication

Adjustable
punch length

Fewer fits for
improved accuracy



[Dimensions in Inches(mm)]

MATE ULTRA® IMT™ FEATURES:



ULTRA® IMT™ 8-STATION INDEXABLE MULTI TOOL

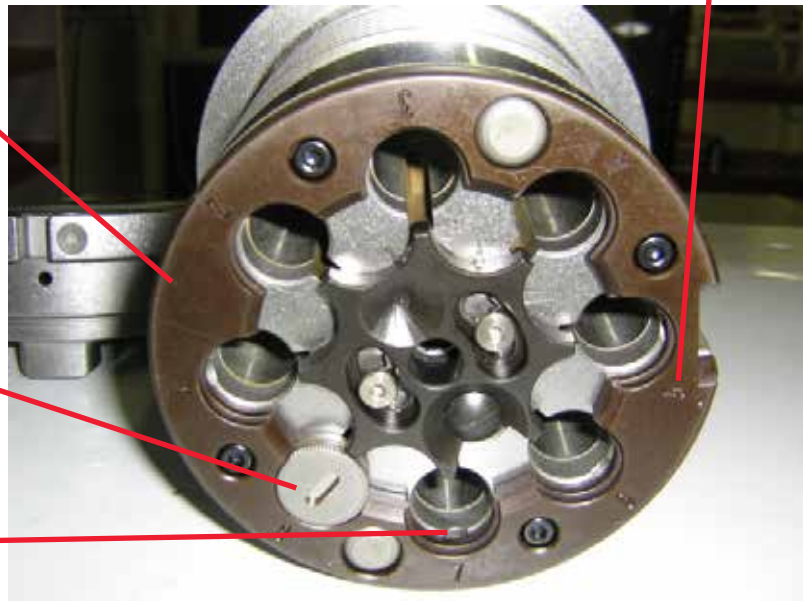


ULTRA® IMT™ 3-STATION INDEXABLE MULTI TOOL

Removable Stripper Plate
Custom dedicated
stripper plate option to
reduce sheet marking
(urethane pads also
available)

No tools needed for
stripper removal

Venting to prevent
slug pulling



Station Identification

Performance and uptime are key. These design features deliver:

- One-piece guide design with fewer fits and tighter tolerances for high precision punching, tighter die clearances, and rigidity for nibbling.
- Sheet metal marking protection: Urethane pads available, unused punches are retained in the up and down direction, and a custom dedicated stripper plate.
- Lubrication grooves on punches and O.D. of guide. Fully ported for lubrication to moving parts.
- Strategically placed vent ports to prevent slug pulling.
- Hardened punch holder body for extended product life.
- Compatibility with high speed punches.



[Dimensions in Inches(mm)]

ORDER GUIDE

ULTRA® IMT™ 3-STATION

Upper MATE01850
Lower MATE00697

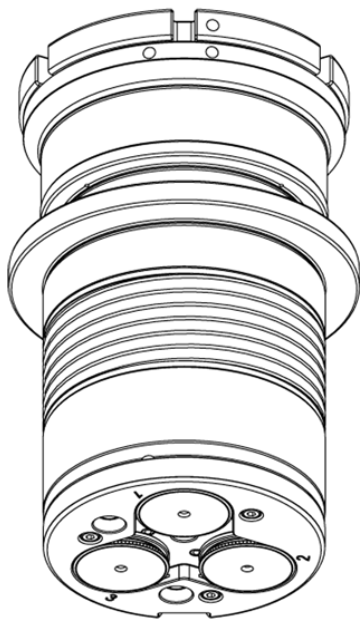
Uses ULTRA TEC® B-Station punches, strippers, and thick turret dies.

ULTRA® IMT™ 8-STATION

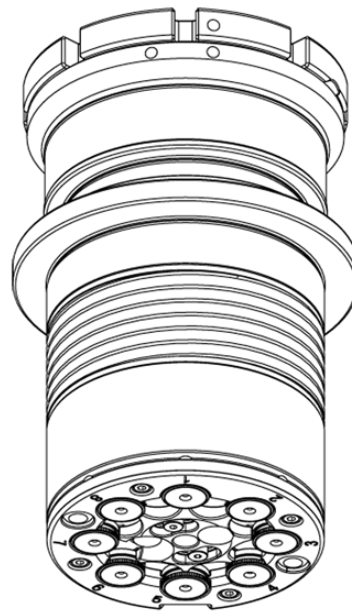
Upper MATE01840
Lower MATE00050

Uses ULTRA TEC® A-Station punches, strippers, and thick turret dies.

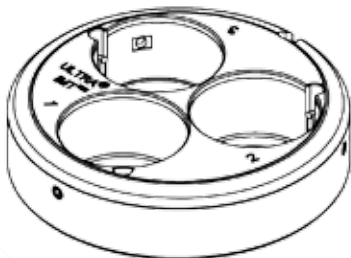
NOTE: see Mate literature LIT00568 for ordering information on ULTRA TEC punches, strippers, and thick turret dies.



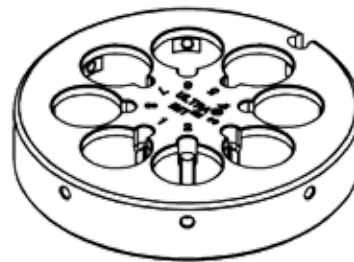
ULTRA® IMT™ 3-Station Upper



ULTRA® IMT™ 8-Station Upper



ULTRA® IMT™ 3-Station Lower



ULTRA® IMT™ 8-Station Lower

[Dimensions in Inches(mm)]





visit mate.com

MATE PRECISION TOOLING

WORLDWIDE HEADQUARTERS:

1295 Lund Boulevard, Anoka, Minnesota 55303 USA
Tel 763.421.0230 Fax 763.421.0285 www.mate.com

EUROPEAN HEADQUARTERS:

Gablonzer Str, 25, 61440 Oberursel, Germany
Tel +49.6171.8878.000 Fax +49.6171.8878.001 www.mate.de

® The Mate Logo is a registered trademark of Mate Precision Tooling Inc.
ULTRA is a registered trademark of Mate Precision Tooling Inc. IMT is a trademark of Mate Precision Tooling Inc.