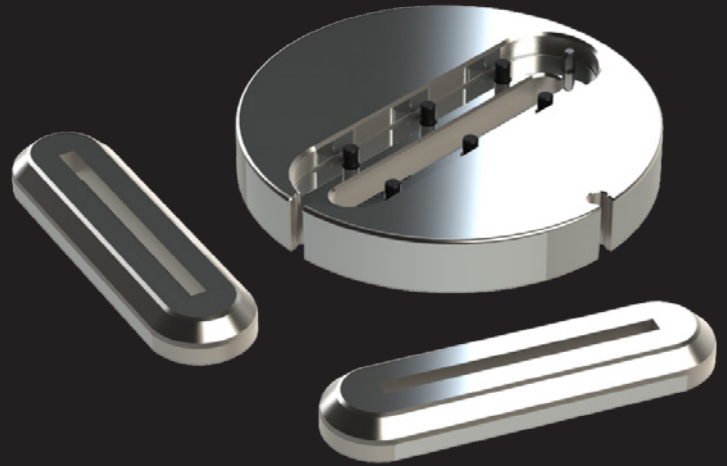


Superior Solutions for Sheet Metal Fabricators

VERSADIE™ THICK TURRET INSERT SLITTING DIE



2014
Part Number

WORLDWIDE HEADQUARTERS:

1295 Lund Boulevard, Anoka, Minnesota 55303 USA
Tel 763.421.0230 Fax 763.421.0285
Toll Free: Tel 800.328.4492 Fax 800.541.0285
mate.com

MATE®
M
**PRECISION
TOOLING**
TRUSTED | QUALITY | SERVICE | SOLUTIONS

VERSADIE™ THICK TURRET INSERT SLITTING DIE

Clamp clearing dies are necessary when maximum sheet usage is required. The ability to punch as close to the clamps reduces both material cost and waste.

Mate Versadie™ takes clamp clearing solutions to a new level with several unique design features. First, there is no need to replace the entire die, with replaceable die inserts. Versadie's inserts are designed to allow for the greatest lengths currently available in the industry, accommodating lengths up to 4.560" (115.82mm) for E Stations and 3.560" (90.42mm) for D Stations.

With its tighter tolerances of the insert to the holder, Versadie has superior overall quality.

For superior performance and longevity, Versadie's slitting die insert is made from MPM82 tool steel. Designed for use in high performance tooling systems, MPM82 is a high speed, particle metallurgy steel intended to provide high value and exceptional versatility making it perfect for slitting operations.

MPM82 TOOL STEEL OFFERS:

- Stronger dies that can withstand the most demanding punching operations
- Sharper edges on the die opening
- Increased machine uptime
- Reduced overall tooling costs
- Lower overall production costs

For maximum longevity, the die body allows shimming after the insert is sharpened during routine maintenance. There's no need for special shims either; simply use standard thick turret die shims.

DIE INSERT

- Premium MPM82 tool steel for superior performance and longevity
- Metric and inch sizes
 - D Station from up to 3.560" (90.42mm)
 - E Station from up to 4.560" (115.82mm)
- Widths up to .509" (12.93mm)
- Mate SlugFree® design

DIE BODY

- S7 Shock-Resisting Tool Steel

SHIMS

- D Station, package of 3 each: 0.016(0.40); 0.032(0.80); 0.048(1.20)
- E Station, package of 3 each: 0.016(0.40); 0.032(0.80); 0.048(1.20)

PRICING AND PART NUMBERS:

MATE02223	D Station Die Body Assembly
MATE02225	E Station Die Body Assembly
D8AQ_A	D Station Slitting Insert
D8AR_A	E Station Slitting Insert
MSAD	D Station Insert Shims (set of 9)
MSAE	E Station Insert Shims (set of 9)



AVAILABLE SHAPES

STANDARD

Rectangle
Oval
Double D

SPECIAL

Rect/oval
Double Rectangle
Rectangle with Tabs
Trapezoid
Cable Opening
Cable Opening with Tabs
Breakaway
Cham Corners
Rad Corners
Spec Rectangles
Bandaid
Parellelogram

[Dimensions in Inches(mm)]

