

SHARPENING SYSTEM PREMIA™

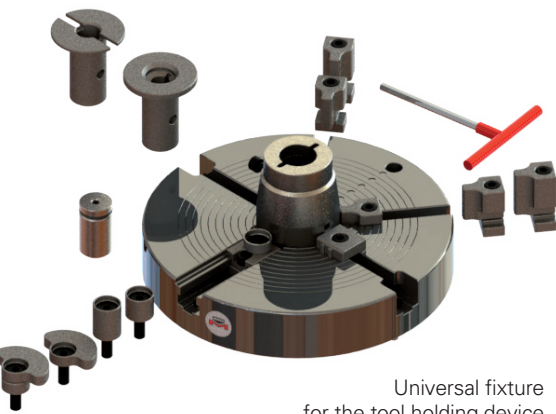


Grind CNC punch press tools with the PREMIA™ for best results

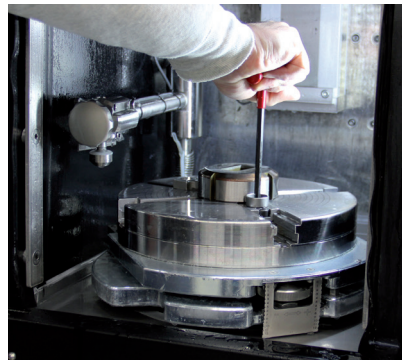


HEFTER
SYSTEMFORM

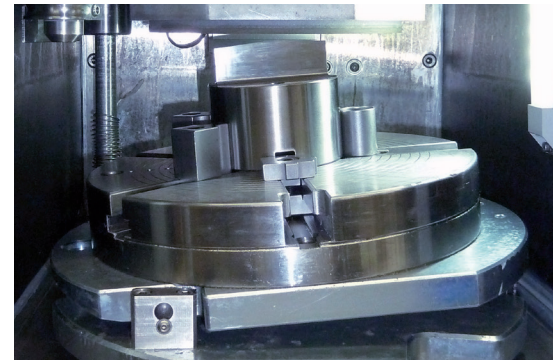
THE PREMIA™ SHARPENING SYSTEM ACCOMMODATES A FULL



Universal fixture
for the tool holding device



Large working space



Variable angle table – for shears up to 12°

Precise punching tool for best results

Correct tooling maintenance procedures are critical to produce the highest quality parts. It increases machine up-time and extends tool life considerably.

The **PREMIA™** sharpening system ensures exceptional results on every sharpening operation. With Premia's easy-to-use touch screen interface, powerful high-output motor and ability to accept any tooling style, keeping your tooling in optimal condition has never been easier.

The precise surface and optimal grinding pattern extend the durability and the service life of the tools essentially.

Sharp tools enable exact results and reduce the energy consumption. The bottom line is: The **PREMIA™** sharpening system makes the production flow running smoothly and cost efficient.

Innovations

- The big colored touch screen is clearly arranged and easy to use. It simplifies and reduces all set-up operations of the sharpening machine significantly
- Automatic data tracking through the monitor, such as the number of grinding operations, the service life of the grinding wheel, etc.
- Solid CBN grinding wheel (Ø 200mm) for a long life and strong grinding performance
- Automatic, inner coolant flow directly through the grinding wheel: The liquid is applied evenly over the whole surface of the wheel and thus preserves the grade of the tools
- Latest dual-stage filtering with MSR™ technology (Magnetic Swarf Retention) for longer maintenance intervals and easy and quick cleaning

Automatic operation

- Once the tool is installed and probed, select the program required and the grinding process will start automatically once the Start button has been pressed
- When the sharpening cycle is finished, the big light signal stops flashing showing the operator the end of the operation
- Ideal for unsupervised operation of the **PREMIA™** sharpening system due to the completely closed working space and the optical status control

Flexibility

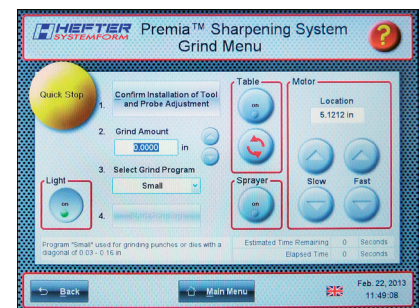
- The **PREMIA™** Universal fixture with the innovative T-slide design accommodates virtually all tooling styles and templates quick and safe – at minimum set-up time
- Fine grind depth and removal rate settings provide maximum flexibility, reliability and consistency
- Three standard programs and two customized programs can be called up. It enables quick and easy storage of individual settings. Full manual mode for unique situations is available
- The powerful 3.3 kW motor is designed to sharpen 0.8 – 190.5mm large tools in an accurate way

Operator convenience

- Status report screen with complete sharpening and wheel maintenance data log of any important components
- Big 40 liter coolant tank on wheels for reduced machine down times and easier cleaning
- Hand sprayer for clearing the working space from residues
- Drawers for convenient storage of tools, measuring instruments or other items

Safety

- Door interlock prevents Premia operation with door open
- Abrasive mist cannot escape during sharpening process keeping the workshop environment clean. No extra extraction required.



Comfortable, quick operation and updating with the touch screen monitor

- Intuitive operation with the menu, automatic and extensive reporting
- USB connection and SD card feeding simplify all setup and maintenance operation

Complete equipment

The **PREMIA™** sharpening system is a perfect system. There are no other tools required to ensure the very best results, produced by the quickest machine on the market, to ensure your tooling investment is maximized.

RANGE OF CNC PUNCH PRESS TOOL STYLES

Advantages at a glance

- Quick, and intuitive operation with a large, coloured touch screen
- Extensive reporting
- Universal fixture for tools of any brand with a diameter of 0.8 – 190.5 mm
- Variable angle table for grinding shears up to 12°
- Big, long lasting grinding wheel (Ø 200 mm)
- Short set-up times
- 3 standard and 2 customer specific programs
- Direct internal coolant flow through the grinding wheel for an even cooling over the work piece
- Latest dual-stage filtering with MSR™ technology (Magnetic Swarf Retention) for longer maintenance intervals
- Big 40 liter coolant tank on wheels for reduced machine down times
- Complete delivery, incl. universal fixture



Quick start of the **PREMIA™** sharpening system:

Step 1 – Install and probe the tool.

Step 2 – Enter the amount to be removed

Step 3 - Select from one of the 3 pre-set programs or create 2 customer specific programs

Step 4 – Press “Start grinding” for automatic operation



The 40 liter coolant tank is equipped with wheels for ease of access for refilling and cleaning

The coolant filtration technology extends the durability of the coolant:

Step 1 – MSR™ technology

The magnetic system captures up to 80% of the sharpening swarf

Step 2 – Filter

Replaceable filter traps the remaining swarf

TECHNICAL SPECIFICATIONS

PREMIA™ Sharpening System / scope of delivery

Grinding wheel

Grinding wheel/diameter*	200 mm
Grinding wheel type	CBN
Rotary table/diameter	320 mm
Maximum grind height	300 mm
Angled polish capability	0° – 12°
Punching tool/diameter, min./ max.	0.8 – 190.5 mm
Accuracy	5 µ
Surface quality after grinding	0.3 Ra
Noise level	< 67 (dB(A))

Grinding motor

Power	3.3 kW
Voltage	400 – 480 V 3P 50 Hz/60 Hz
Grinding motor	2,820 rpm at 50 Hz ± 10%

Coolant system

2-phase filter system with MSRTM technology	Yes
Coolant tank capacity	40 ltr.
Coolant pump/power	120 W
Coolant pump/flow rate	50 ltr./min.
Coolant spray gun	Yes
Coolant liquid compound (refer to product data sheet for detailed values)	95% water / 5% synthetic concentrate

Miscellaneous

Colored touch screen monitor	Yes
Big light signal lamp	Yes
Status reporting	Yes
Standard programs	3
Customer specific programs	2
Transfer of service data via USB	Yes
Two drawers (storage of tooling, instruments)	Yes
Dimension (LxWxH)	1943 x 762 x 660 mm
Weight (unpacked/packed)	300 kg/468 kg

* depending on material and application



www.hefter-premia.com

The **PREMIA™** Universal Grinding Fixture accepts a complete range of punch press tooling such as

- Amada
- Trumpf
- Salvagnini
- Euromac
- Muratec
- Prima Power



HEFTER Systemform GmbH
 Am Mühlbach 6, D-83209 Prien, Tel. +49 8051 686-201, Fax +49 8051 686-211
contact@hefter-premia.com, www.hefter-premia.com

TECHNICAL SPECIFICATIONS

PREMIA™ Sharpening System / scope of delivery

Grinding wheel

Grinding wheel/diameter*	200 mm
Grinding wheel type	CBN
Rotary table/diameter	320 mm
Maximum grind height	300 mm
Angled polish capability	0° – 12°
Punching tool/diameter, min./ max.	0.8 – 190.5 mm
Accuracy	5 µ
Surface quality after grinding	0.3 Ra
Noise level	< 67 (dB(A))

Grinding motor

Power	3.3 kW
Voltage	400 – 480 V 3P 50 Hz/60 Hz
Grinding motor	2,820 rpm at 50 Hz ± 10%

Coolant system

2-phase filter system with MSRTM technology	Yes
Coolant tank capacity	40 ltr.
Coolant pump/power	120 W
Coolant pump/flow rate	50 ltr./min.
Coolant spray gun	Yes
Coolant liquid compound (refer to product data sheet for detailed values)	95% water / 5% synthetic concentrate

Miscellaneous

Colored touch screen monitor	Yes
Big light signal lamp	Yes
Status reporting	Yes
Standard programs	3
Customer specific programs	2
Transfer of service data via USB	Yes
Two drawers (storage of tooling, instruments)	Yes
Dimension (LxWxH)	1943 x 762 x 660 mm
Weight (unpacked/packed)	300 kg/468 kg

* depending on material and application

(subject to technical changes)

The **PREMIA™** Universal Grinding Fixture accepts a complete range of punch press tooling such as

- Amada
- Trumpf
- Salvagnini
- Euromac
- Muratec
- Prima Power

